

Muscular Dystrophy

Muscular dystrophy (MD) is caused by genetic mutations that prevent the body from producing healthy muscle proteins, most notably dystrophin. The disease has different types, the most common being Duchenne (DMD) and Becker (BMD). These mutations are primarily inherited through distinct patterns depending on the exact gene and type of MD]

Genetic Basis

At the core of muscular dystrophy is the failure to maintain muscle fibers, usually because vital membrane-stabilizing protein complexes are defective or missing.

- **The Dystrophin Gene:** The most common forms of MD (DMD and BMD) are caused by mutations in the `\(DMD\)` gene. This is one of the largest genes in the human genome and is highly prone to spontaneous mutations.]
- **Protein Function:** Dystrophin acts as a molecular shock absorber. It links the inner structure of a muscle cell to the extracellular membrane. When it is absent or malformed, normal muscle contraction causes cellular tearing, muscle wasting, and cell death.

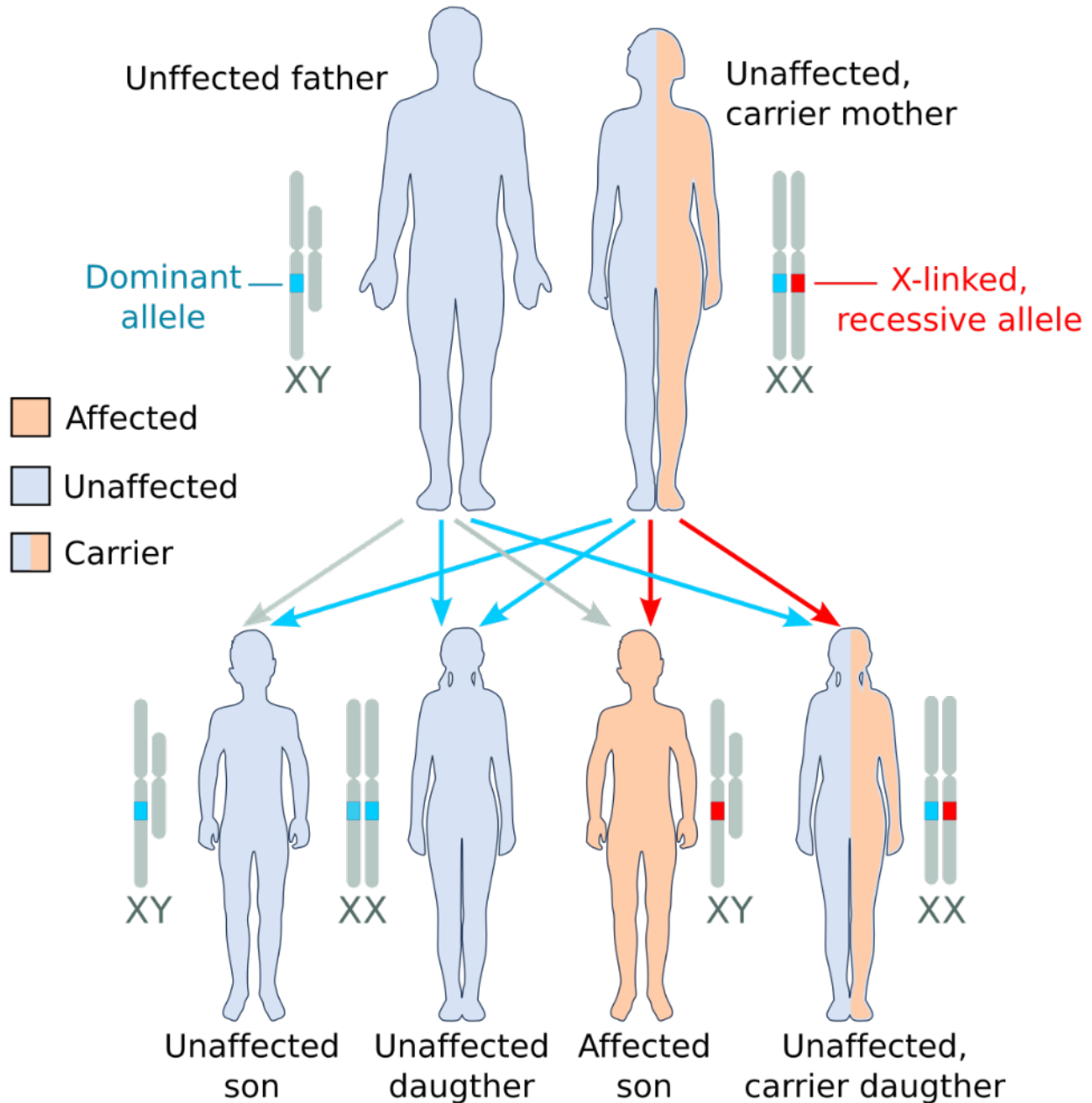
Inheritance Patterns

Different types of muscular dystrophy are passed down through various inheritance mechanisms]

- **X-Linked Recessive:** This applies to the most common childhood forms, Duchenne and Becker MD. The mutated gene is located on the X chromosome. Males have only one X chromosome, meaning a single mutated copy will cause the disease. Females have two X chromosomes, so they can be carriers (possessing one mutated and one healthy copy) usually without showing symptoms. Female carriers have a 50% chance of passing the altered gene to their sons (who will develop the disease) and a 50% chance of passing it to their daughters (who will become carriers]
- **Autosomal Recessive:** Many types of Limb-Girdle muscular dystrophy are inherited this way. The mutated gene sits on a non-sex chromosome. To develop the disease, a person must inherit a mutated copy of the gene from *both* parents. Parents who are carriers of a single mutated gene do not have the condition themselves.]
- **Autosomal Dominant:** In other forms of Limb-Girdle MD and myotonic dystrophy, only one parent needs to pass on a single mutated gene to trigger the disease. Each child of an affected parent has a 50% chance of inheriting the mutated gene and developing the condition. [

Spontaneous Mutations

It is important to note that many cases of muscular dystrophy occur in families with no prior history of the condition. These are known as *(de novo)* (spontaneous) mutations, meaning the genetic error occurs for the first time in the affected individual.]



Is the Dystrophy Gene on the Y Chromosome in Humans?

No — the gene responsible for most forms of muscular dystrophy, including **Duchenne muscular dystrophy (DMD)** and **Becker muscular dystrophy (BMD)**, is **not** located on the Y chromosome. It is the **DMD gene**, which provides instructions for making the **dystrophin protein**, a critical structural protein in muscle fibers [teachers.institute +1](#) .

Location and Inheritance

- The **DMD gene** is located on the **X chromosome**, specifically on the short arm (Xp21.2) [biologyinsights.com](#) .
- Because it is on the X chromosome, DMD and BMD are classified as **X-linked recessive disorders** [helpdementia.com +1](#) .
- Males (XY) have only one X chromosome, so if it carries a mutation in the DMD gene, they will develop the disease. Females (XX) usually have a second, healthy copy of the gene, which can compensate, making them carriers rather than affected individuals [helpdementia.com +1](#) .

Y Chromosome Role

- The Y chromosome in humans is much smaller and gene-poor compared to the X chromosome. It contains genes mainly related to male sex determination and fertility, but **no known dystrophy-related genes** [Oxford Academic](#) .
- While the Y chromosome can influence certain health conditions, it does not carry the DMD gene or any major dystrophy-causing genes [Oxford Academic](#) .

Summary

- **Dystrophy gene (DMD)** → **X chromosome**, not Y chromosome.
- **Y chromosome** → no major dystrophy-related genes; mainly involved in male-specific functions.
- Most muscular dystrophies are **X-linked**, not Y-linked.

If you are concerned about genetic risk, genetic testing can determine whether a person carries mutations in the DMD gene on the X chromosome.

[Read less](#) ^